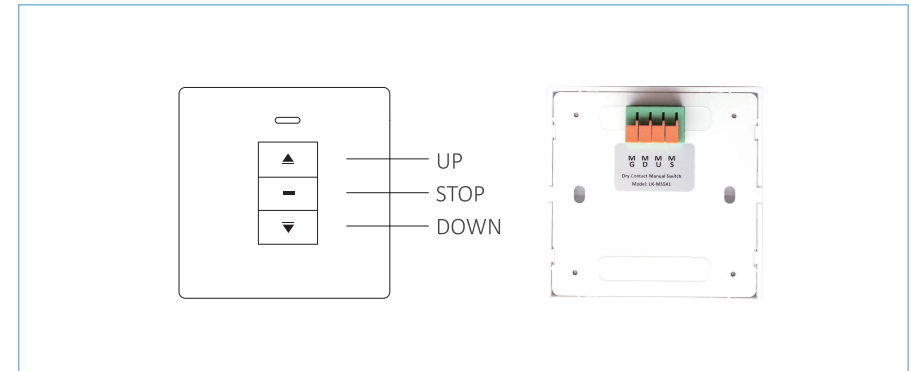


LK-MS541 Manual Switch



■ Button & terminal



Sym.	MG	MD	MU	MS
Description	COM	DOWN	UP	STOP

■ Feature

- One channel control
- 3 dry contact signals output
- Four wires to control actuator Open/Stop/Close
- Can work with LK-MR551/MR561/CP6/CP7/CP8/UP2/FP3 controllers
- standard 86 type, easy for installation

■ Ordering code

Model	Channel	Control Method	Output Signal	Dimension
LK-MS541	1	Manual	Dry contact	86*86*22mm

■ Solution

